

Rev 0, 10/18/2023

Lowell Middlesex Canal Park Cross Point to Merrimack

Another Continuation Idea for the BFRT into Lowell



Presentation to the Chelmsford BPAC

19 October 2023

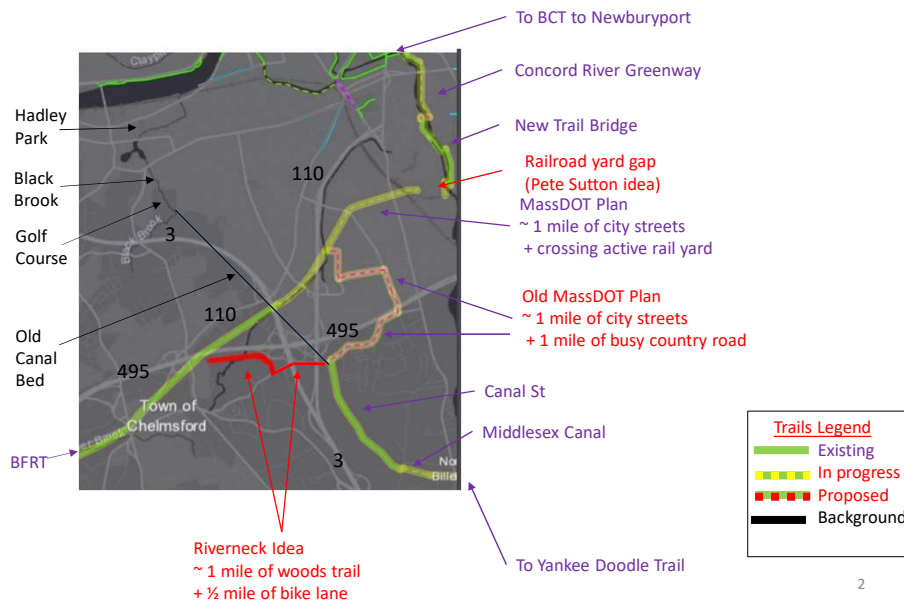
EARLY CONCEPT

Doug Chandler
Chelmsford Rep to
Middlesex Canal Commission

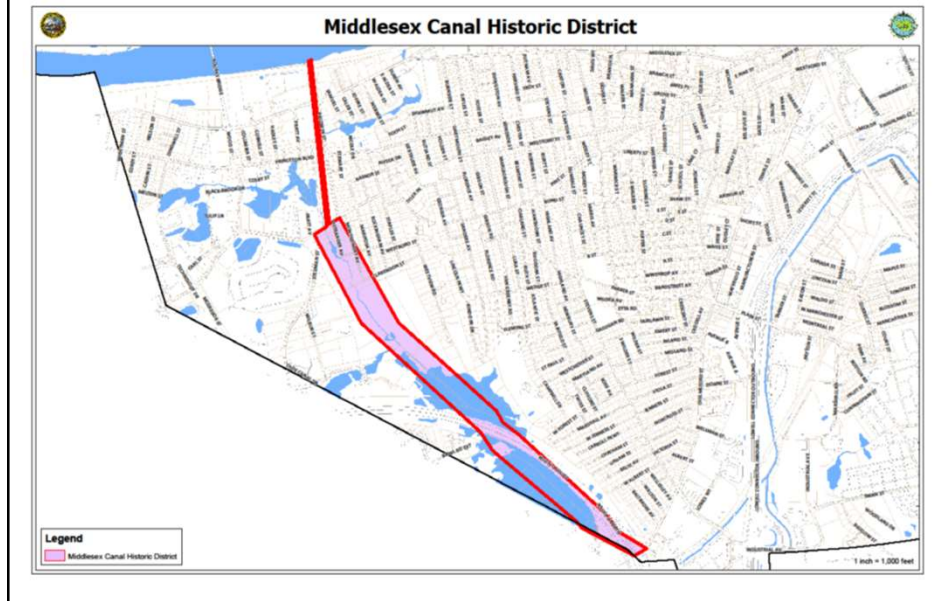


1

Review: Area Trails and Plans



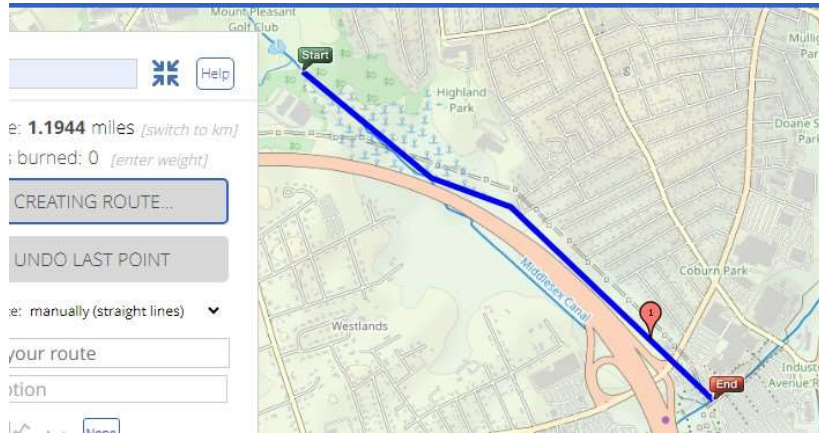
Latest Idea - Northern Continuation of BFRT and Canal Towpath Trail



Backing & Funding

- Sen. Kennedy would like to see the Middlesex Canal section in Lowell commemorated by a park, nature trail, multi-use path etc.
 - Old canal is now a water hazard on the golf course
 - South of GC is a quarter mile of the best preserved "watered" canal "prism" in 26 miles
 - To south, canal is under swamp or highway
 - To east, there are two Lowell schools that would benefit from nature trail and shortcuts for kids
- Funding would be from federal and state grants via Rep Trahan

Overall: Cross Point BFR to Golf Course = 1.2 miles



5

Easy Trail: Via Pipeline & Powerline, 110 to Swamp = 0.7 miles



Pipeline (west path):
 OK as is for walking/running
 or mountain bike
 Six 1-foot stream jumps
 Enter from Alpine Butcher

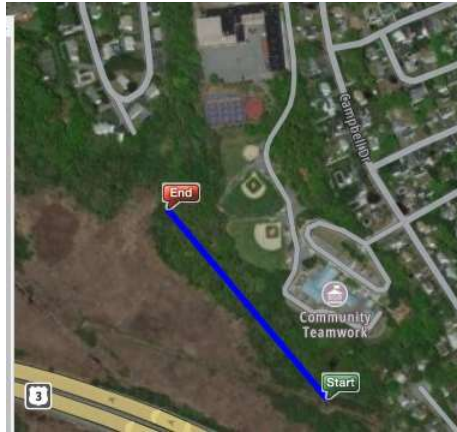
Powerline(east ROW):
 Flat and level but overgrown
 Enter behind brick pump house

Run together in some places

Either one is almost as good
 as a railroad right of way
 Choice depends on
 - land ownership,
 - easement,
 - safety rules

6

Easy Park and Nature Trail: Swamp to Schools = 0.3 miles



Flat woods:

- Above the waterline
- Downhill from schools and baseball fields
- About 1000x200 feet
- Good for nature trail, park, picnic, etc
- Well-worn easy path from "Start" from "Start" to nearest school

Owned by City and Eastern Salt Co

Hard Trail: Schools to Local Streets or Canal = 0.3 miles



Hard to find a route:

- Above the waterline
- Downhill from schools/fields
- Gentle for bike path

More exploration needed

Summary

- This is just early concept work
- Multi-use trail from 110 to schools, with park and nature trail, looks *relatively* easy
- More exploration needed at north end
 - Wet or steep terrain
 - Nothing much to see north of the golf course

Rev 0, 10/18/2023

Lowell Middlesex Canal Park Cross Point to Merrimack

Another Continuation Idea for the BFRT into Lowell



Presentation to the Chelmsford BPAC

19 October 2023

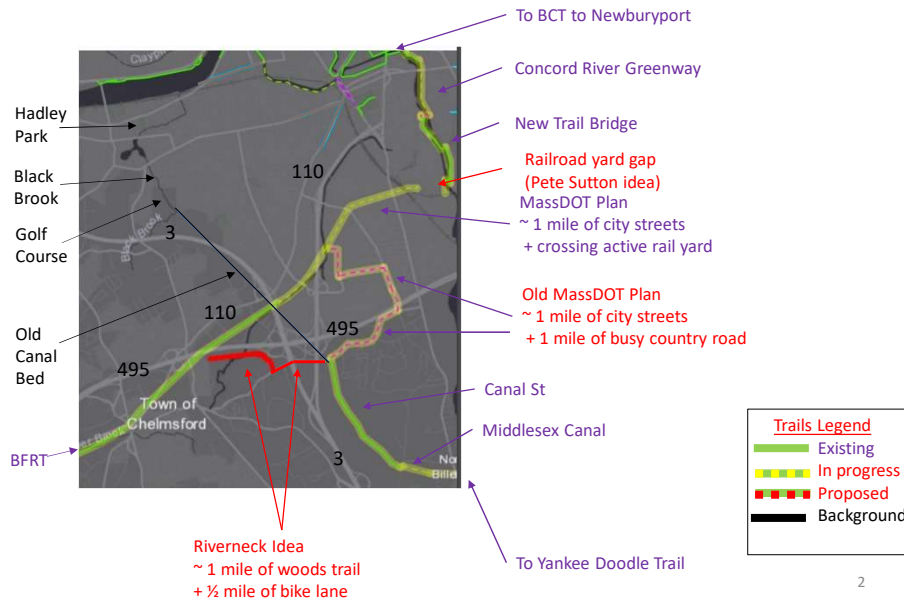
EARLY CONCEPT

Doug Chandler
Chelmsford Rep to
Middlesex Canal Commission

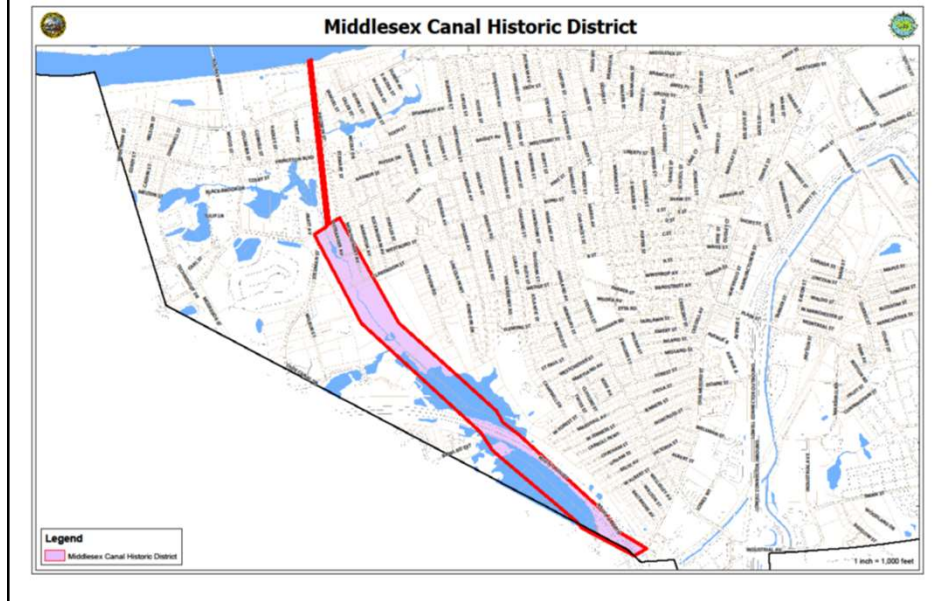


1

Review: Area Trails and Plans



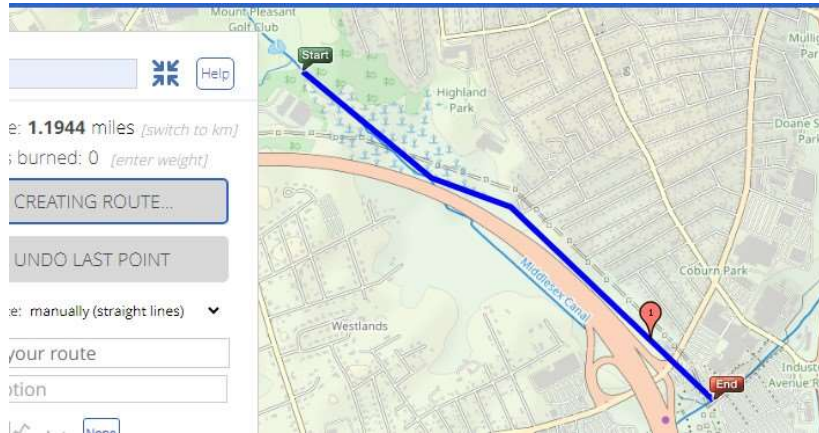
Latest Idea - Northern Continuation of BFRT and Canal Towpath Trail



Backing & Funding

- Sen. Kennedy would like to see the Middlesex Canal section in Lowell commemorated by a park, nature trail, multi-use path etc.
 - Old canal is now a water hazard on the golf course
 - South of GC is a quarter mile of the best preserved "watered" canal "prism" in 26 miles
 - To south, canal is under swamp or highway
 - To east, there are two Lowell schools that would benefit from nature trail and shortcuts for kids
- Funding would be from federal and state grants via Rep Trahan

Overall: Cross Point BFR to Golf Course = 1.2 miles



5

Easy Trail: Via Pipeline & Powerline, 110 to Swamp = 0.7 miles



Pipeline (west path):
 OK as is for walking/running
 or mountain bike
 Six 1-foot stream jumps
 Enter from Alpine Butcher

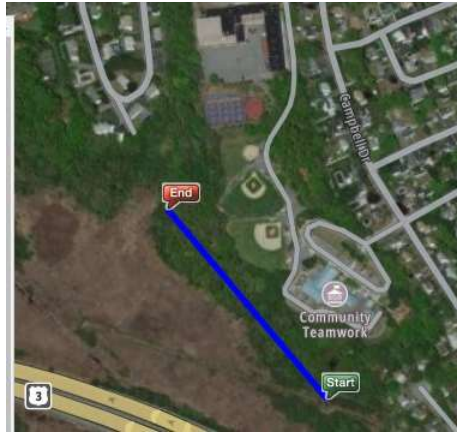
Powerline(east ROW):
 Flat and level but overgrown
 Enter behind brick pump house

Run together in some places

Either one is almost as good
 as a railroad right of way
 Choice depends on
 - land ownership,
 - easement,
 - safety rules

6

Easy Park and Nature Trail: Swamp to Schools = 0.3 miles

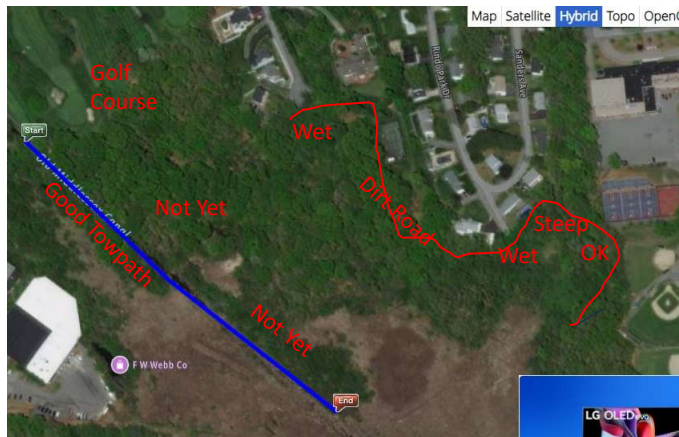


Flat woods:

- Above the waterline
- Downhill from schools and baseball fields
- About 1000x200 feet
- Good for nature trail, park, picnic, etc
- Well-worn easy path from "Start" from "Start" to nearest school

Owned by City and Eastern Salt Co

Hard Trail: Schools to Local Streets or Canal = 0.3 miles



Hard to find a route:

- Above the waterline
- Downhill from schools/fields
- Gentle for bike path

More exploration needed

Summary

- This is just early concept work
- Multi-use trail from 110 to schools, with park and nature trail, looks *relatively* easy
- More exploration needed at north end
 - Wet or steep terrain
 - Nothing much to see north of the golf course

Rev 0, 10/18/2023

Lowell Middlesex Canal Park Cross Point to Merrimack

Another Continuation Idea for the BFRT into Lowell



Presentation to the Chelmsford BPAC

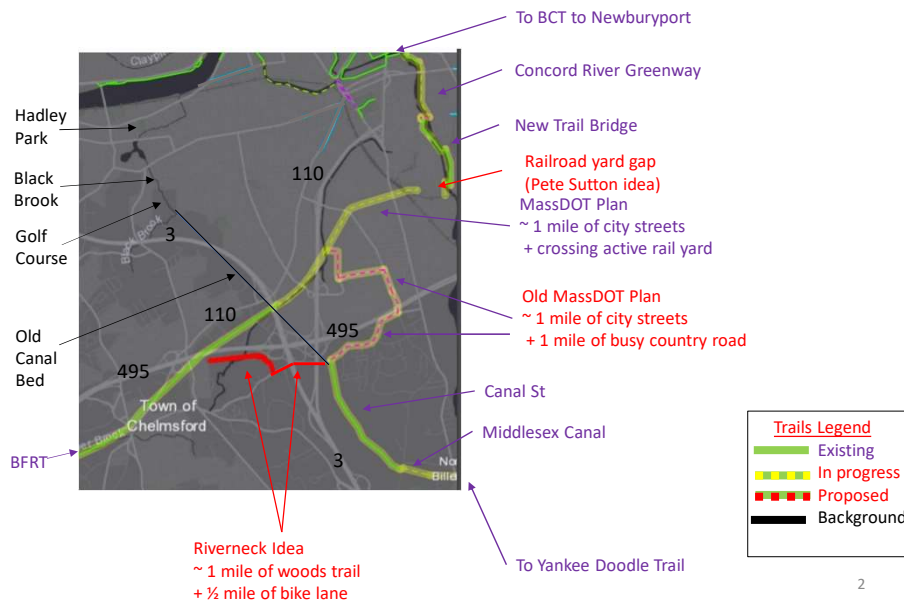
19 October 2023

EARLY CONCEPT

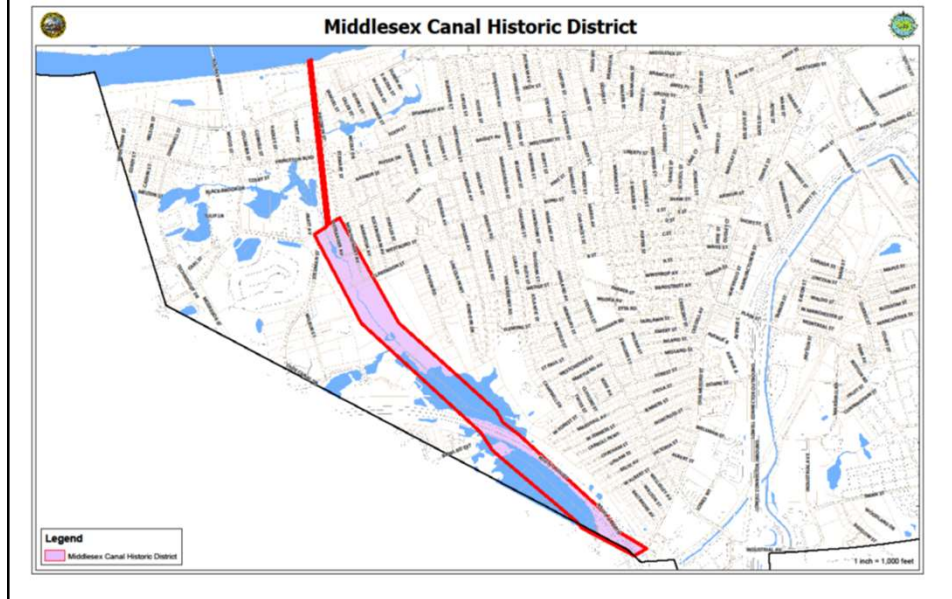
Doug Chandler
Chelmsford Rep to
Middlesex Canal Commission



Review: Area Trails and Plans



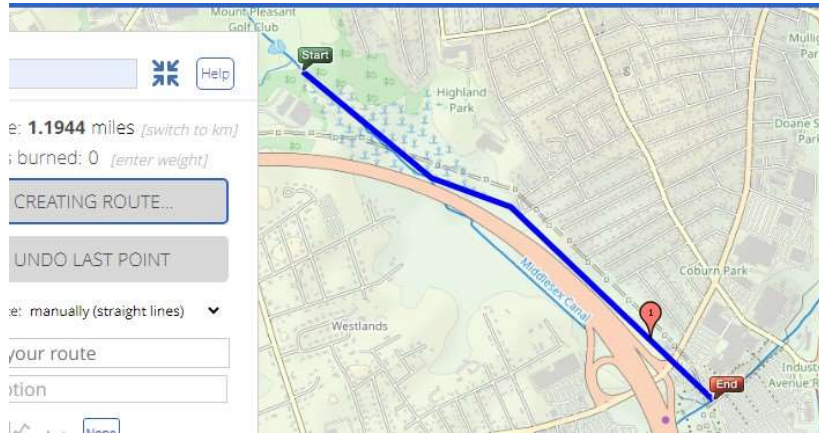
Latest Idea - Northern Continuation of BFRT and Canal Towpath Trail



Backing & Funding

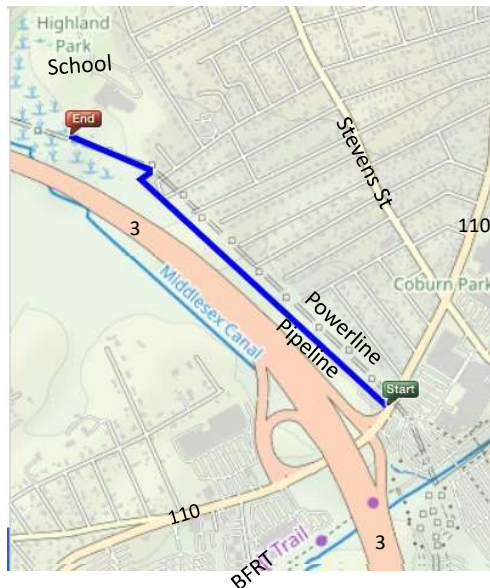
- Sen. Kennedy would like to see the Middlesex Canal section in Lowell commemorated by a park, nature trail, multi-use path etc.
 - Old canal is now a water hazard on the golf course
 - South of GC is a quarter mile of the best preserved "watered" canal "prism" in 26 miles
 - To south, canal is under swamp or highway
 - To east, there are two Lowell schools that would benefit from nature trail and shortcuts for kids
- Funding would be from federal and state grants via Rep Trahan

Overall: Cross Point BFR to Golf Course = 1.2 miles



5

Easy Trail: Via Pipeline & Powerline, 110 to Swamp = 0.7 miles



Pipeline (west path):
 OK as is for walking/running
 or mountain bike
 Six 1-foot stream jumps
 Enter from Alpine Butcher

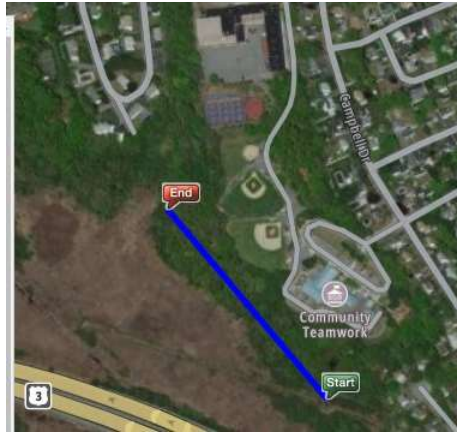
Powerline(east ROW):
 Flat and level but overgrown
 Enter behind brick pump house

Run together in some places

Either one is almost as good
 as a railroad right of way
 Choice depends on
 - land ownership,
 - easement,
 - safety rules

6

Easy Park and Nature Trail: Swamp to Schools = 0.3 miles



Flat woods:

- Above the waterline
- Downhill from schools and baseball fields
- About 1000x200 feet
- Good for nature trail, park, picnic, etc
- Well-worn easy path from "Start" from "Start" to nearest school

Owned by City and Eastern Salt Co

Hard Trail: Schools to Local Streets or Canal = 0.3 miles



Hard to find a route:

- Above the waterline
- Downhill from schools/fields
- Gentle for bike path

More exploration needed

Summary

- This is just early concept work
- Multi-use trail from 110 to schools, with park and nature trail, looks *relatively* easy
- More exploration needed at north end
 - Wet or steep terrain
 - Nothing much to see north of the golf course

Rev 0, 10/18/2023

Lowell Middlesex Canal Park Cross Point to Merrimack

Another Continuation Idea for the BFRT into Lowell



Presentation to the Chelmsford BPAC

19 October 2023

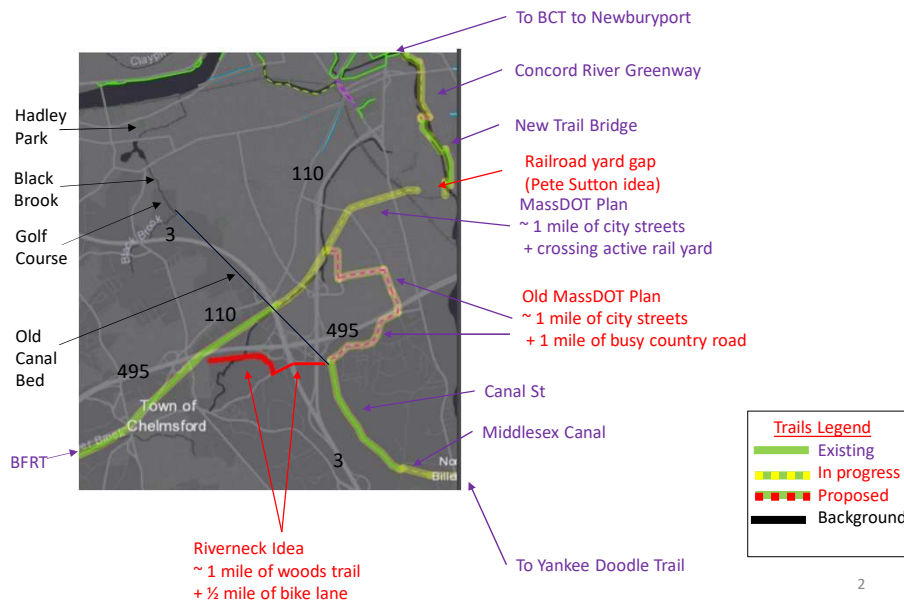
EARLY CONCEPT

Doug Chandler
Chelmsford Rep to
Middlesex Canal Commission

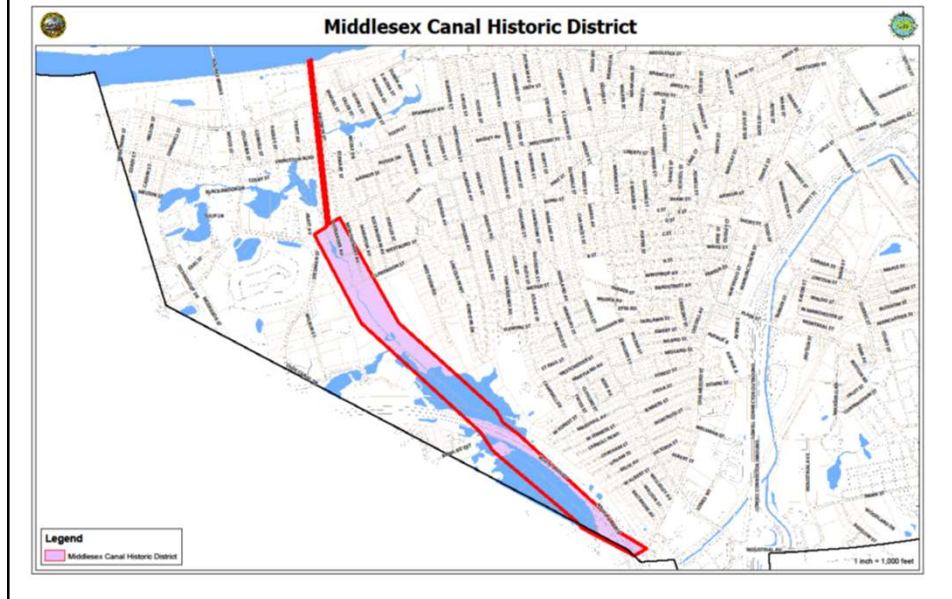


1

Review: Area Trails and Plans



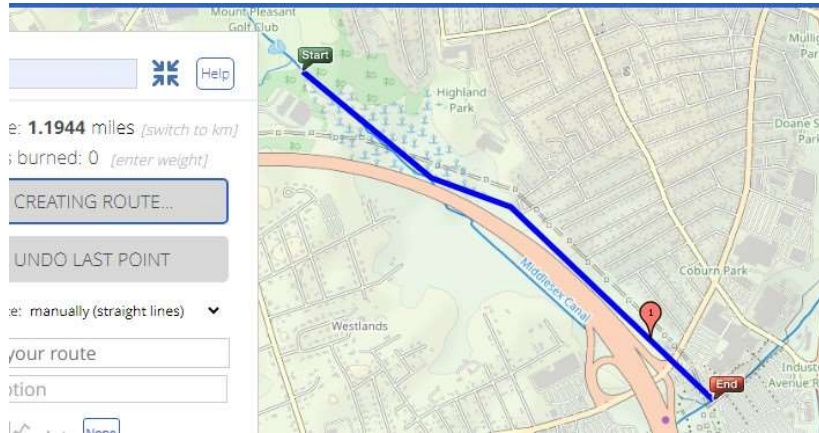
Latest Idea - Northern Continuation of BFRT and Canal Towpath Trail



Backing & Funding

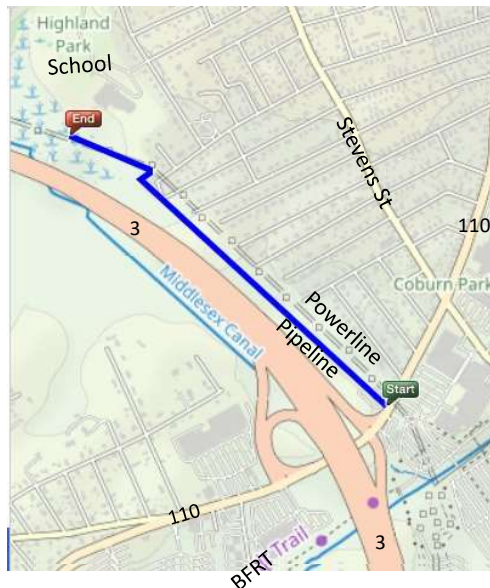
- Sen. Kennedy would like to see the Middlesex Canal section in Lowell commemorated by a park, nature trail, multi-use path etc.
 - Old canal is now a water hazard on the golf course
 - South of GC is a quarter mile of the best preserved "watered" canal "prism" in 26 miles
 - To south, canal is under swamp or highway
 - To east, there are two Lowell schools that would benefit from nature trail and shortcuts for kids
- Funding would be from federal and state grants via Rep Trahan

Overall: Cross Point BFR to Golf Course = 1.2 miles



5

Easy Trail: Via Pipeline & Powerline, 110 to Swamp = 0.7 miles



Pipeline (west path):
 OK as is for walking/running
 or mountain bike
 Six 1-foot stream jumps
 Enter from Alpine Butcher

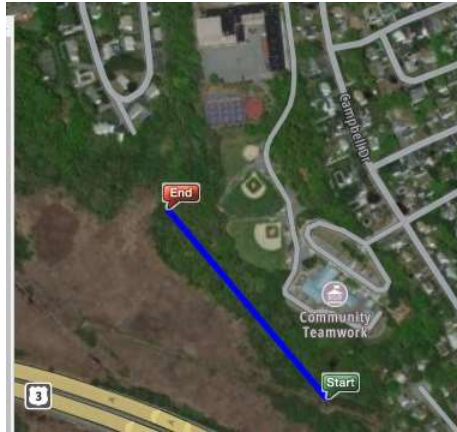
Powerline(east ROW):
 Flat and level but overgrown
 Enter behind brick pump house

Run together in some places

Either one is almost as good
 as a railroad right of way
 Choice depends on
 - land ownership,
 - easement,
 - safety rules

6

Easy Park and Nature Trail: Swamp to Schools = 0.3 miles

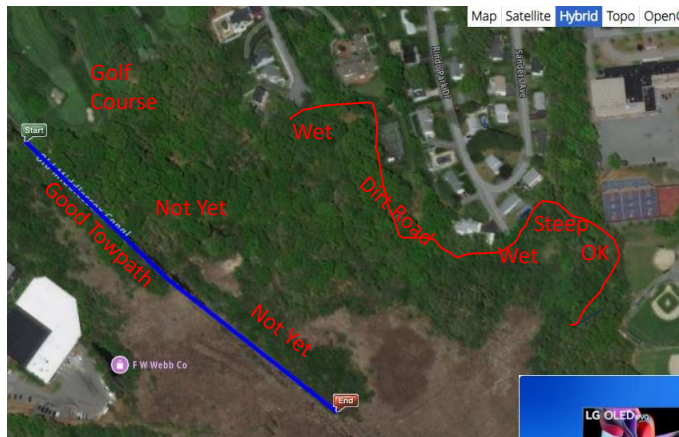


Flat woods:

- Above the waterline
- Downhill from schools and baseball fields
- About 1000x200 feet
- Good for nature trail, park, picnic, etc
- Well-worn easy path from "Start" from "Start" to nearest school

Owned by City and Eastern Salt Co

Hard Trail: Schools to Local Streets or Canal = 0.3 miles



Hard to find a route:

- Above the waterline
- Downhill from schools/fields
- Gentle for bike path

More exploration needed

Summary

- This is just early concept work
- Multi-use trail from 110 to schools, with park and nature trail, looks *relatively* easy
- More exploration needed at north end
 - Wet or steep terrain
 - Nothing much to see north of the golf course

Rev 0, 10/18/2023

Lowell Middlesex Canal Park Cross Point to Merrimack

Another Continuation Idea for the BFRT into Lowell



Presentation to the Chelmsford BPAC

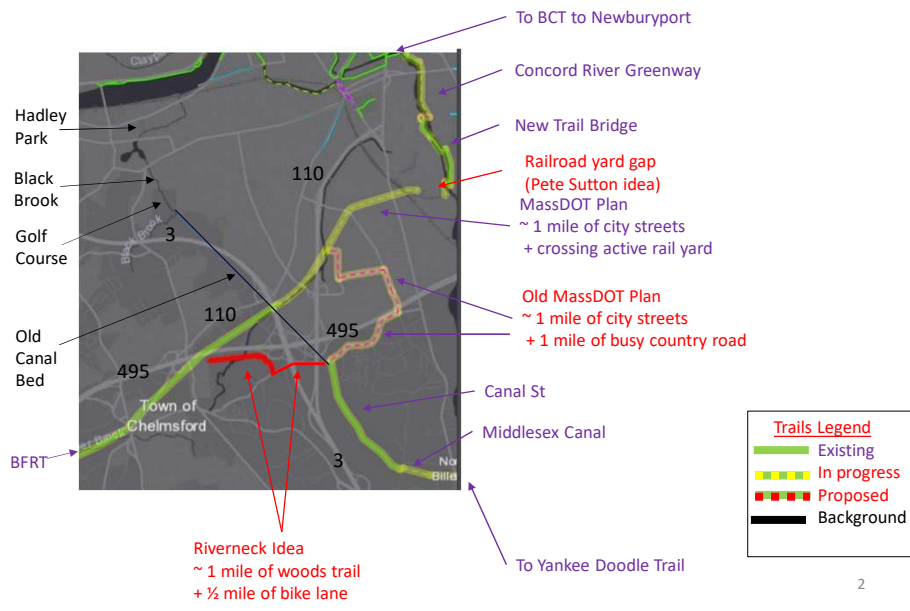
19 October 2023

EARLY CONCEPT

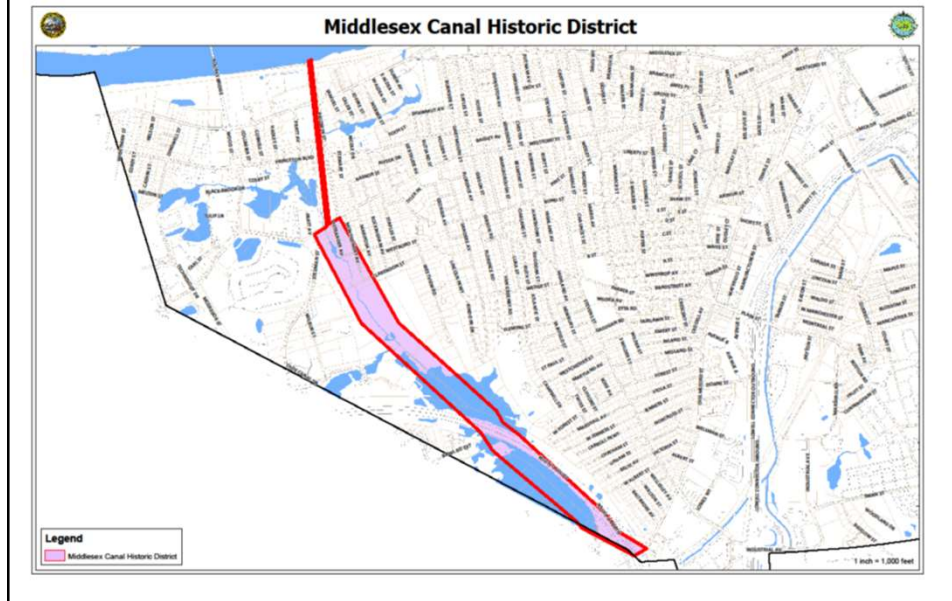
Doug Chandler
Chelmsford Rep to
Middlesex Canal Commission



Review: Area Trails and Plans



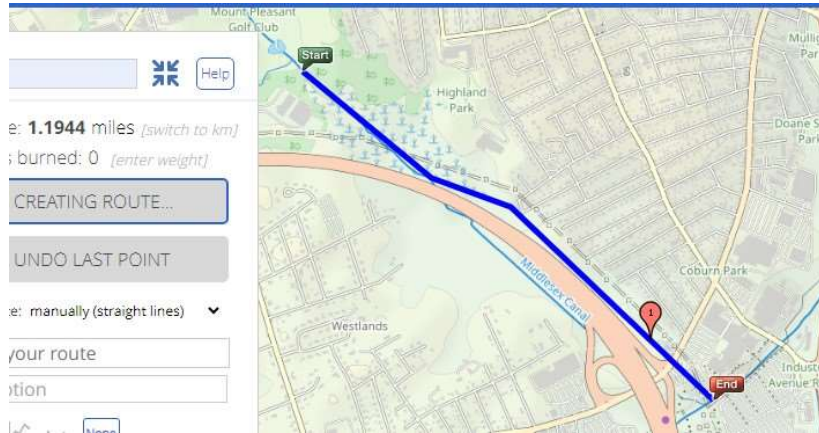
Latest Idea - Northern Continuation of BFRT and Canal Towpath Trail



Backing & Funding

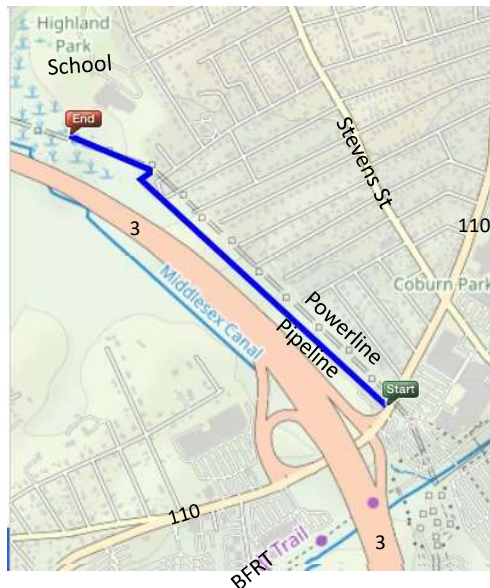
- Sen. Kennedy would like to see the Middlesex Canal section in Lowell commemorated by a park, nature trail, multi-use path etc.
 - Old canal is now a water hazard on the golf course
 - South of GC is a quarter mile of the best preserved "watered" canal "prism" in 26 miles
 - To south, canal is under swamp or highway
 - To east, there are two Lowell schools that would benefit from nature trail and shortcuts for kids
- Funding would be from federal and state grants via Rep Trahan

Overall: Cross Point BFR to Golf Course = 1.2 miles



5

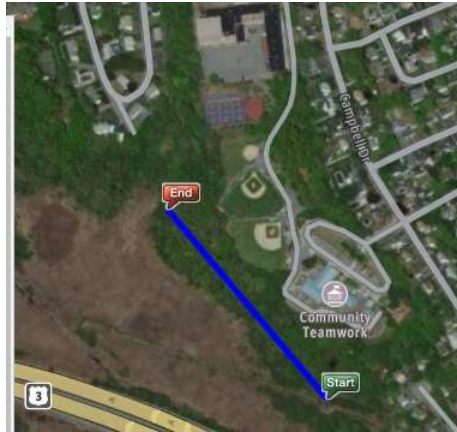
Easy Trail: Via Pipeline & Powerline, 110 to Swamp = 0.7 miles



- Pipeline (west path):
 - OK as is for walking/running or mountain bike
 - Six 1-foot stream jumps
 - Enter from Alpine Butcher
- Powerline(east ROW):
 - Flat and level but overgrown
 - Enter behind brick pump house
- Run together in some places
- Either one is almost as good as a railroad right of way
 - land ownership,
 - easement,
 - safety rules

6

Easy Park and Nature Trail: Swamp to Schools = 0.3 miles



Flat woods:

- Above the waterline
- Downhill from schools and baseball fields
- About 1000x200 feet
- Good for nature trail, park, picnic, etc
- Well-worn easy path from "Start" from "Start" to nearest school

Owned by City and Eastern Salt Co

Hard Trail: Schools to Local Streets or Canal = 0.3 miles



Hard to find a route:

- Above the waterline
- Downhill from schools/fields
- Gentle for bike path

More exploration needed

Summary

- This is just early concept work
- Multi-use trail from 110 to schools, with park and nature trail, looks *relatively* easy
- More exploration needed at north end
 - Wet or steep terrain
 - Nothing much to see north of the golf course

Rev 0, 10/18/2023

Lowell Middlesex Canal Park Cross Point to Merrimack

Another Continuation Idea for the BFRT into Lowell



Presentation to the Chelmsford BPAC

19 October 2023

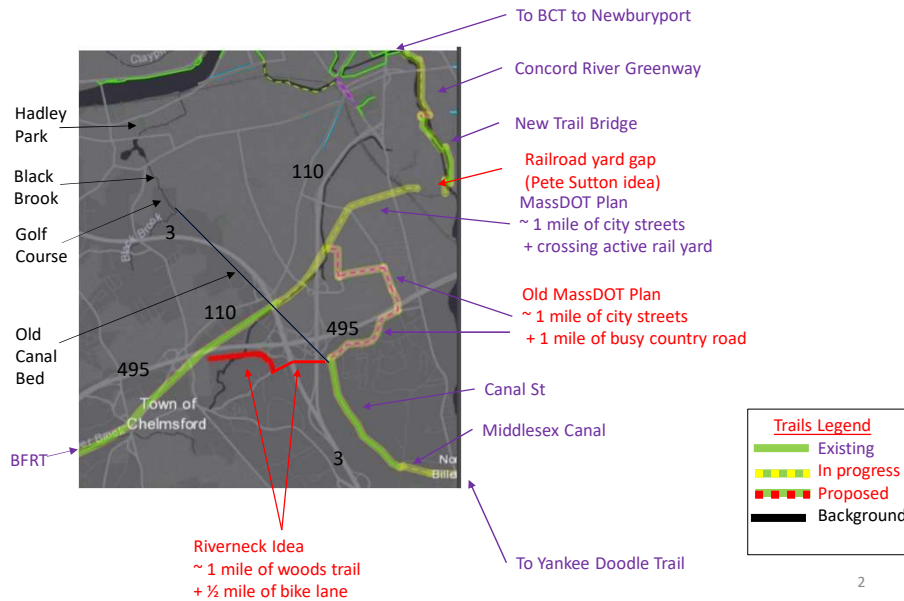
EARLY CONCEPT

Doug Chandler
Chelmsford Rep to
Middlesex Canal Commission

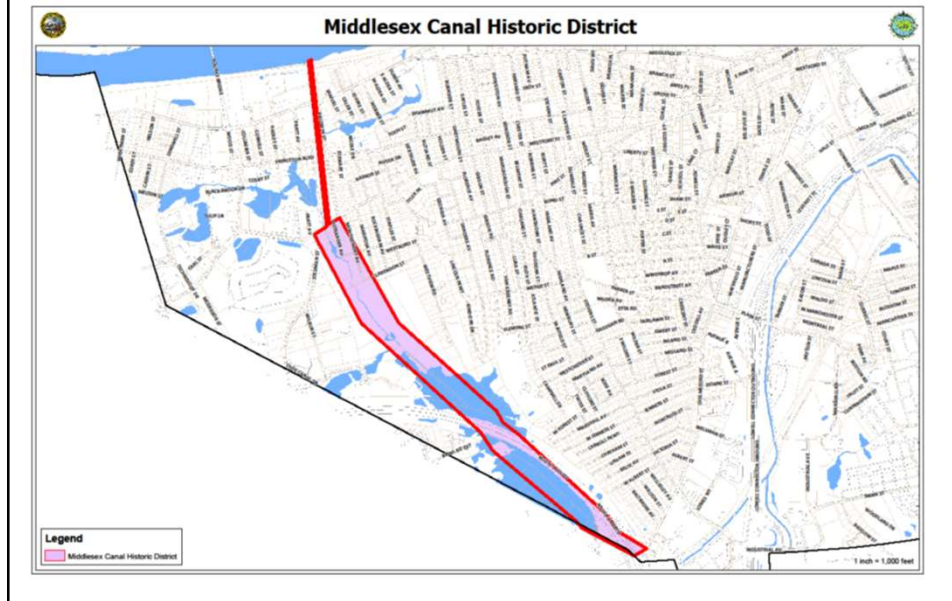


1

Review: Area Trails and Plans



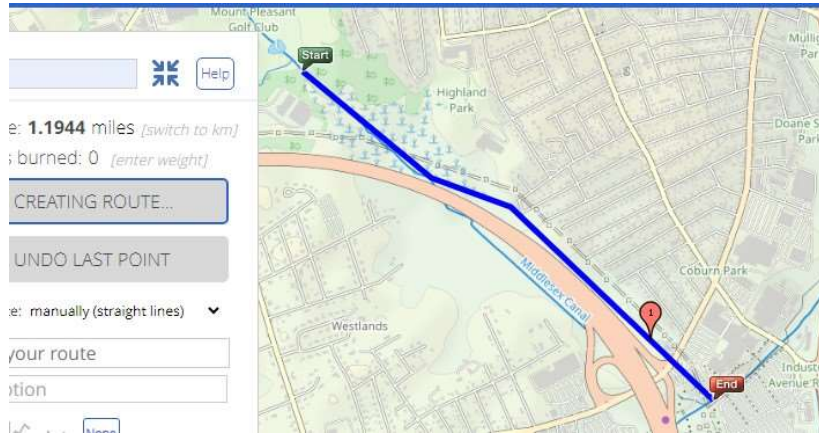
Latest Idea - Northern Continuation of BFRT and Canal Towpath Trail



Backing & Funding

- Sen. Kennedy would like to see the Middlesex Canal section in Lowell commemorated by a park, nature trail, multi-use path etc.
 - Old canal is now a water hazard on the golf course
 - South of GC is a quarter mile of the best preserved "watered" canal "prism" in 26 miles
 - To south, canal is under swamp or highway
 - To east, there are two Lowell schools that would benefit from nature trail and shortcuts for kids
- Funding would be from federal and state grants via Rep Trahan

Overall: Cross Point BFR to Golf Course = 1.2 miles



5

Easy Trail: Via Pipeline & Powerline, 110 to Swamp = 0.7 miles



Pipeline (west path):
 OK as is for walking/running
 or mountain bike
 Six 1-foot stream jumps
 Enter from Alpine Butcher

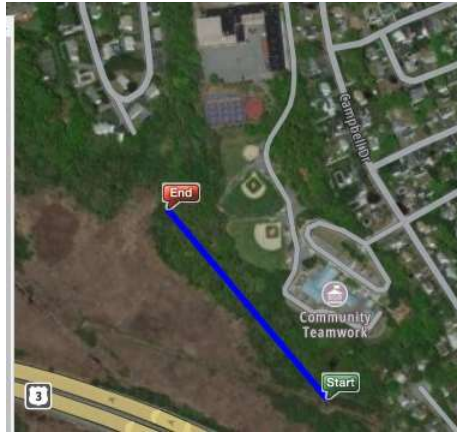
Powerline(east ROW):
 Flat and level but overgrown
 Enter behind brick pump house

Run together in some places

Either one is almost as good
 as a railroad right of way
 Choice depends on
 - land ownership,
 - easement,
 - safety rules

6

Easy Park and Nature Trail: Swamp to Schools = 0.3 miles



Flat woods:

- Above the waterline
- Downhill from schools and baseball fields
- About 1000x200 feet
- Good for nature trail, park, picnic, etc
- Well-worn easy path from "Start" from "Start" to nearest school

Owned by City and Eastern Salt Co

Hard Trail: Schools to Local Streets or Canal = 0.3 miles



Hard to find a route:

- Above the waterline
- Downhill from schools/fields
- Gentle for bike path

More exploration needed

Summary

- This is just early concept work
- Multi-use trail from 110 to schools, with park and nature trail, looks *relatively* easy
- More exploration needed at north end
 - Wet or steep terrain
 - Nothing much to see north of the golf course

Rev 0, 10/18/2023

Lowell Middlesex Canal Park Cross Point to Merrimack

Another Continuation Idea for the BFRT into Lowell



Presentation to the Chelmsford BPAC

19 October 2023

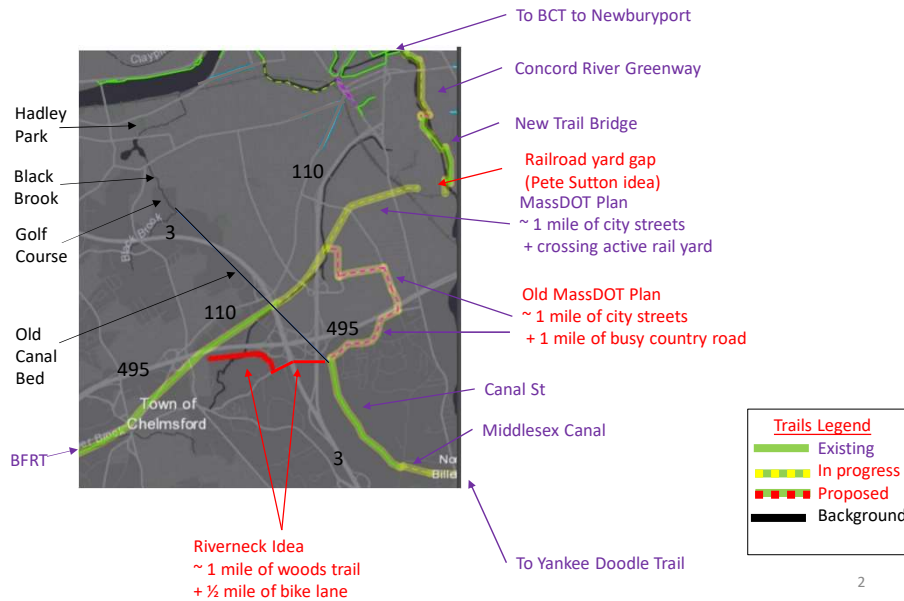
EARLY CONCEPT

Doug Chandler
Chelmsford Rep to
Middlesex Canal Commission

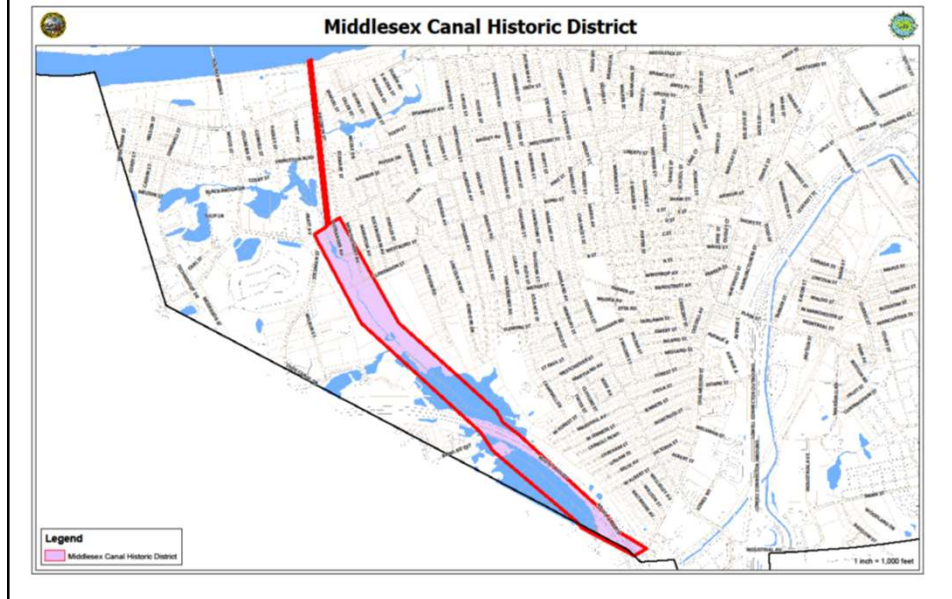


1

Review: Area Trails and Plans



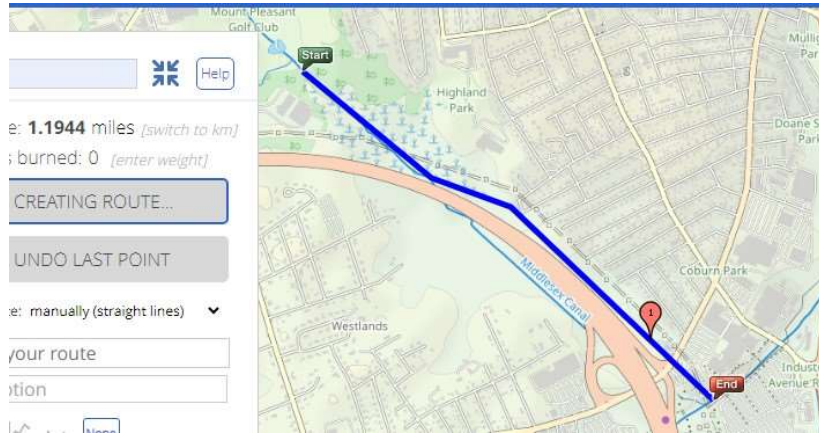
Latest Idea - Northern Continuation of BFRT and Canal Towpath Trail



Backing & Funding

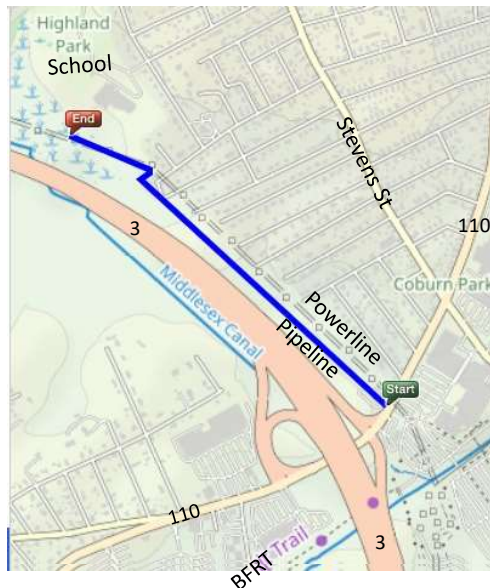
- Sen. Kennedy would like to see the Middlesex Canal section in Lowell commemorated by a park, nature trail, multi-use path etc.
 - Old canal is now a water hazard on the golf course
 - South of GC is a quarter mile of the best preserved "watered" canal "prism" in 26 miles
 - To south, canal is under swamp or highway
 - To east, there are two Lowell schools that would benefit from nature trail and shortcuts for kids
- Funding would be from federal and state grants via Rep Trahan

Overall: Cross Point BFR to Golf Course = 1.2 miles



5

Easy Trail: Via Pipeline & Powerline, 110 to Swamp = 0.7 miles



Pipeline (west path):
 OK as is for walking/running
 or mountain bike
 Six 1-foot stream jumps
 Enter from Alpine Butcher

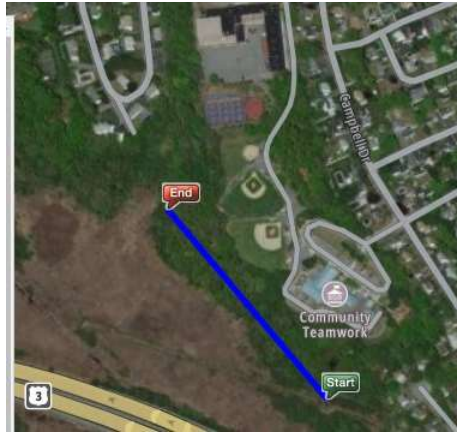
Powerline(east ROW):
 Flat and level but overgrown
 Enter behind brick pump house

Run together in some places

Either one is almost as good
 as a railroad right of way
 Choice depends on
 - land ownership,
 - easement,
 - safety rules

6

Easy Park and Nature Trail: Swamp to Schools = 0.3 miles



Flat woods:

- Above the waterline
- Downhill from schools and baseball fields
- About 1000x200 feet
- Good for nature trail, park, picnic, etc
- Well-worn easy path from "Start" from "Start" to nearest school

Owned by City and Eastern Salt Co

Hard Trail: Schools to Local Streets or Canal = 0.3 miles



Hard to find a route:

- Above the waterline
- Downhill from schools/fields
- Gentle for bike path

More exploration needed

Summary

- This is just early concept work
- Multi-use trail from 110 to schools, with park and nature trail, looks *relatively* easy
- More exploration needed at north end
 - Wet or steep terrain
 - Nothing much to see north of the golf course

Rev 0, 10/18/2023

Lowell Middlesex Canal Park Cross Point to Merrimack

Another Continuation Idea for the BFRT into Lowell



Presentation to the Chelmsford BPAC

19 October 2023

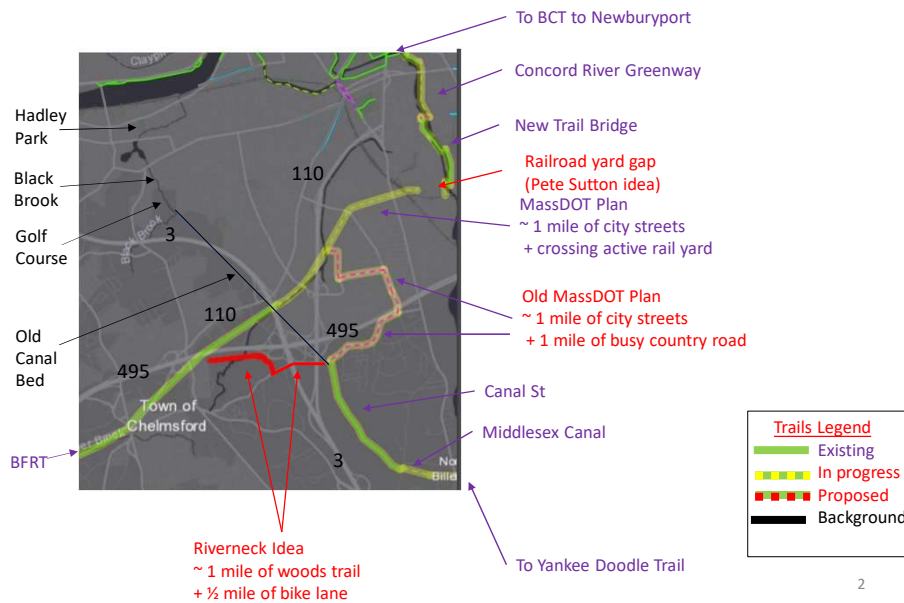
EARLY CONCEPT

Doug Chandler
Chelmsford Rep to
Middlesex Canal Commission



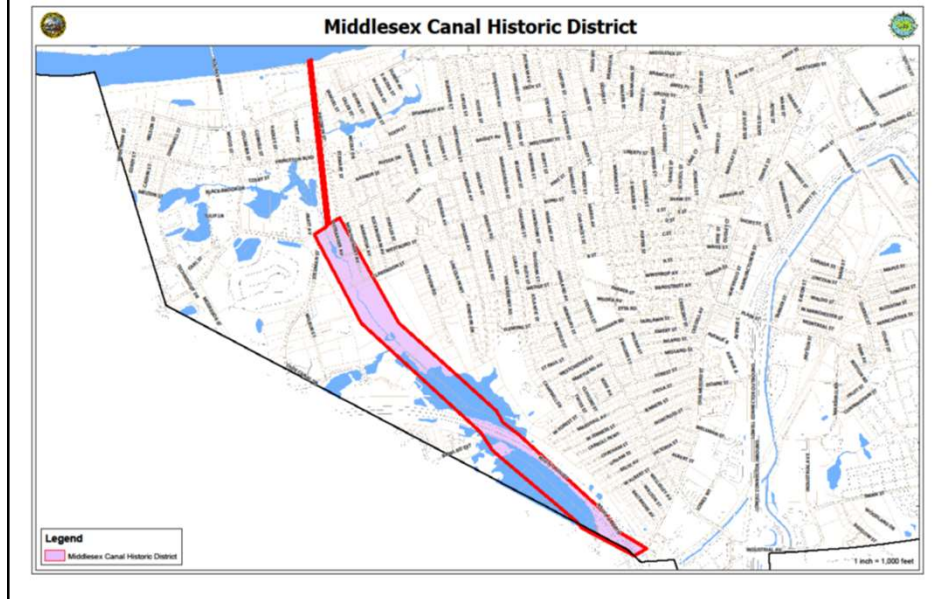
1

Review: Area Trails and Plans



2

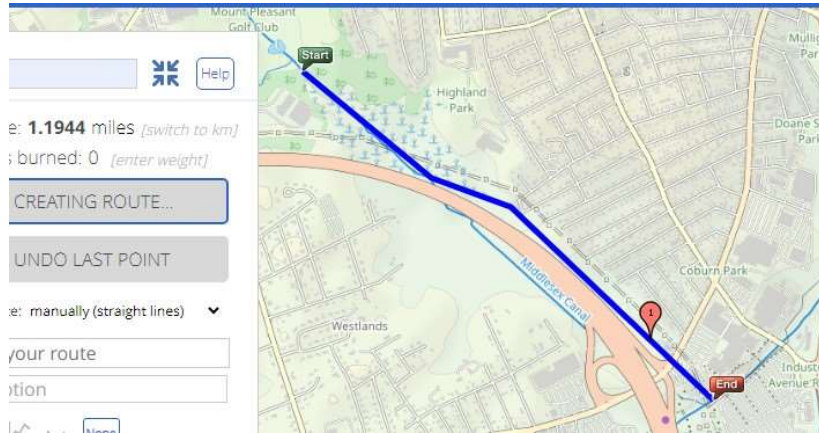
Latest Idea - Northern Continuation of BFRT and Canal Towpath Trail



Backing & Funding

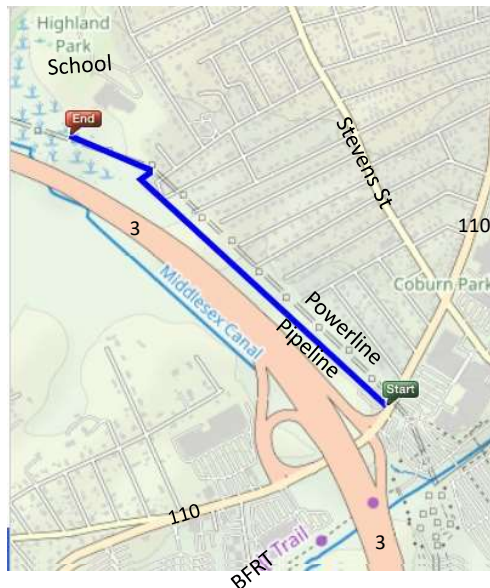
- Sen. Kennedy would like to see the Middlesex Canal section in Lowell commemorated by a park, nature trail, multi-use path etc.
 - Old canal is now a water hazard on the golf course
 - South of GC is a quarter mile of the best preserved "watered" canal "prism" in 26 miles
 - To south, canal is under swamp or highway
 - To east, there are two Lowell schools that would benefit from nature trail and shortcuts for kids
- Funding would be from federal and state grants via Rep Trahan

Overall: Cross Point BFR to Golf Course = 1.2 miles



5

Easy Trail: Via Pipeline & Powerline, 110 to Swamp = 0.7 miles



Pipeline (west path):
 OK as is for walking/running
 or mountain bike
 Six 1-foot stream jumps
 Enter from Alpine Butcher

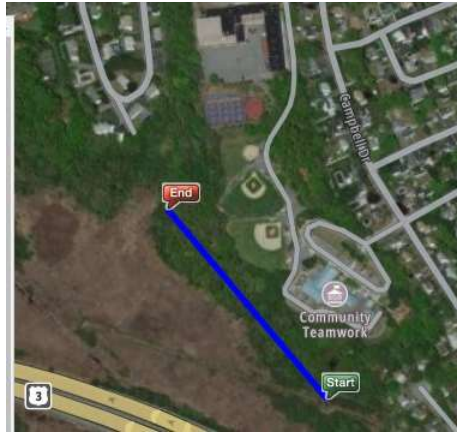
Powerline(east ROW):
 Flat and level but overgrown
 Enter behind brick pump house

Run together in some places

Either one is almost as good
 as a railroad right of way
 Choice depends on
 - land ownership,
 - easement,
 - safety rules

6

Easy Park and Nature Trail: Swamp to Schools = 0.3 miles



Flat woods:

- Above the waterline
- Downhill from schools and baseball fields
- About 1000x200 feet
- Good for nature trail, park, picnic, etc
- Well-worn easy path from "Start" from "Start" to nearest school

Owned by City and Eastern Salt Co

Hard Trail: Schools to Local Streets or Canal = 0.3 miles



Hard to find a route:

- Above the waterline
- Downhill from schools/fields
- Gentle for bike path

More exploration needed

Summary

- This is just early concept work
- Multi-use trail from 110 to schools, with park and nature trail, looks *relatively* easy
- More exploration needed at north end
 - Wet or steep terrain
 - Nothing much to see north of the golf course