

THE COMMONWEALTH OF MASSACHUSETTS HIGHWAY DEPARTMENT

BILLERICA MIDDLESEX CANAL PARK			
STATE	FED AID PROJ. NO.	SHEET NO.	TOTAL SHEETS
MASS.		1	50
PROJECT FILE NO. 602945			

TITLE SHEET AND INDEX

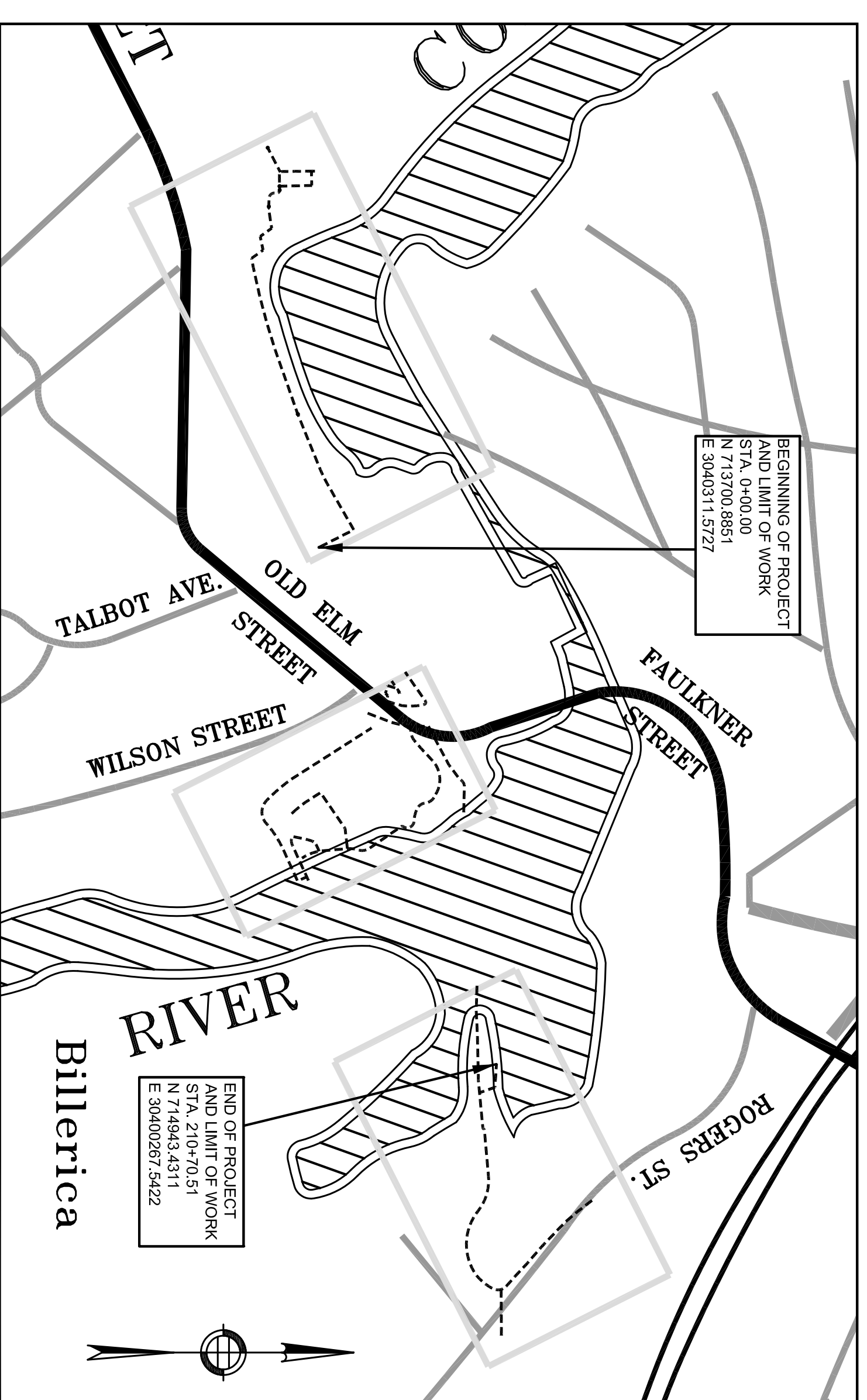
PLAN AND PROFILE OF MIDDLESEX CANAL PARK IN THE TOWN OF BILLERICA MIDDLESEX COUNTY FEDERAL AID PROJECT NO.

THE 1988 MASSACHUSETTS HIGHWAY DEPARTMENT STANDARD SPECIFICATIONS FOR HIGHWAYS AND BRIDGES; THE SUPPLEMENTAL SPECIFICATIONS DATED DECEMBER 11, 2002; THE STANDARD SPECIAL PROVISIONS DATED APRIL 21, 2005; THE 1977 CONSTRUCTION STANDARDS; THE APRIL 2003 METRIC/ENGLISH SUPPLEMENTAL DRAWINGS; THE 2003 "MANUAL ON UNIFORM TRAFFIC CONTROL DEVICES FOR STREETS AND HIGHWAYS; THE 1996 CONSTRUCTION AND TRAFFIC STANDARD DETAILS; THE 1968 "STANDARD DRAWINGS FOR TRAFFIC SIGNALS AND HIGHWAY LIGHTING"; AND THE LATEST EDITION OF AMERICAN STANDARD FOR NURSERY STOCK WILL GOVERN.

SHEET NO.	DESCRIPTION
1	TITLE SHEET AND INDEX
2	LEGEND AND GENERAL NOTES
3-16	TYPICAL SECTIONS
17-21	CONSTRUCTION PLANS
22-25	PROFILES
26-29	LANDSCAPE PLANS
30-50	CONSTRUCTION DETAILS

DESIGN DESIGNATION

DESIGN SPEED 20 MPH
 ADT (2007) N/A
 ADT (2017) N/A
 K N/A
 D N/A
 T (PEAK HOUR) N/A
 T (AVERAGE DAY) N/A
 DHV N/A
 DDHT N/A
 FUNCTIONAL CLASSIFICATION: N/A
 GREENWAY



LENGTH OF PROJECT = 3,580 FEET = 0.68 MILES
 SCALES - AS NOTED

APRIL 2010

25% DESIGN SUBMISSION

PREPARED BY:
ICON parks design
 20 Franklin St.
 Dorchester, MA 02122

mass DOT

MASSACHUSETTS
 HIGHWAY DEPARTMENT
 RECOMMENDED FOR APPROVAL

DEPARTMENT OF TRANSPORTATION
 FEDERAL HIGHWAY ADMINISTRATION
 APPROVED

CHIEF ENGINEER _____ DATE _____
 APPROVED

DIVISION ADMINISTRATOR _____ DATE _____
 MHD COMMISSIONER _____ DATE _____