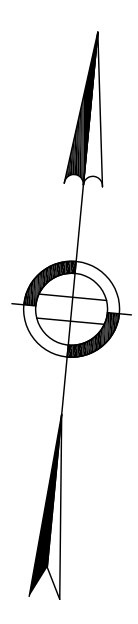


HWY. GUARD TYPE SW
NONE

TRAFFIC SIGNAL CONDUIT
NONE

WATER SUPPLY ALTERATIONS
NONE

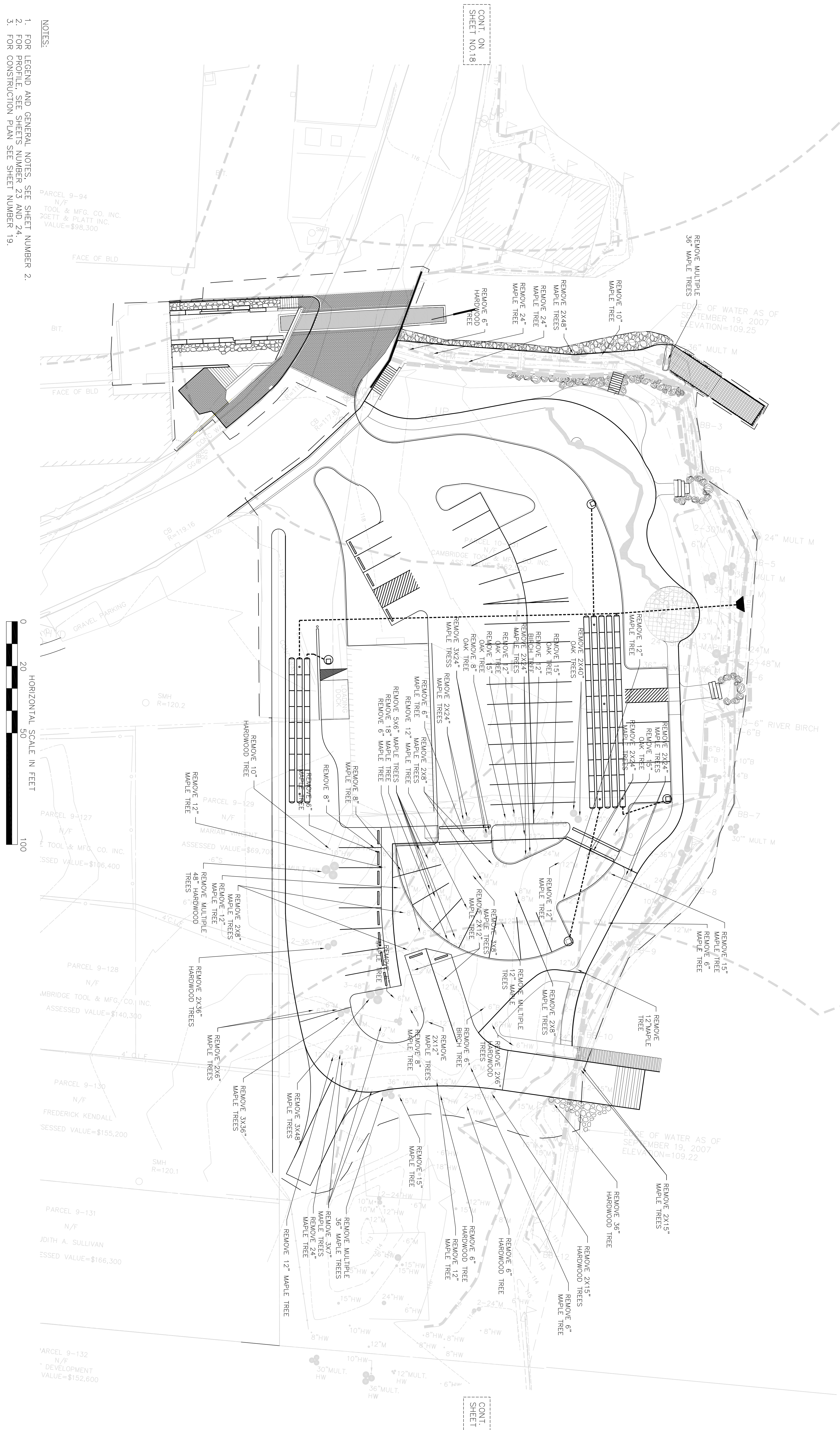
DRAINAGE DETAILS
NONE



BILLERICA
MIDDLESEX CANAL PARK

STATE	FED. AID PROJ. NO.	SHEET TOTAL
MASS.		NO. SHEETS
		20 50

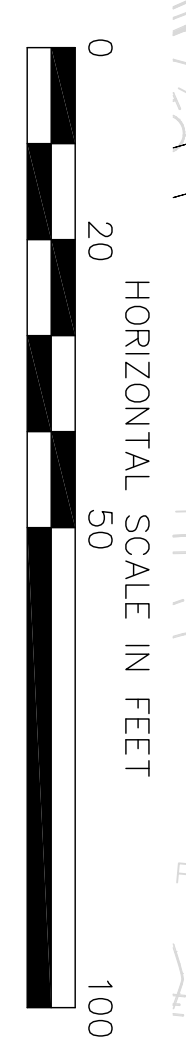
PROJECT FILE NO. 602945
CONSTRUCTION PLAN
AREAS 2 AND 3



CONT. ON
SHEET NO.18

CONT. ON
SHEET NO.21

- NOTES:
1. FOR LEGEND AND GENERAL NOTES, SEE SHEET NUMBER 2.
 2. FOR PROFILE, SEE SHEETS NUMBER 23 AND 24.
 3. FOR CONSTRUCTION PLAN SEE SHEET NUMBER 19.



PARCEL 9-94
N/F
TOOL & MFG. CO. INC.
36ETT & PLATT INC.
VALUE=\$98,300

PARCEL 9-127
N/F
TOOL & MFG. CO. INC.
ASSESSED VALUE=\$196,400

PARCEL 9-128
N/F
CAMBRIDGE TOOL & MFG. CO. INC.
ASSESSED VALUE=\$140,300

PARCEL 9-130
N/F
FREDERICK KENDALL
ASSESSED VALUE=\$155,200

PARCEL 9-131
N/F
JUDITH A. SULLIVAN
ASSESSED VALUE=\$166,300

PARCEL 9-132
N/F
DEVELOPMENT
VALUE=\$152,600

SMH
R=120.2

SMH
R=120.1

EDGE OF WATER AS OF
SEPTEMBER 19, 2007
ELEVATION=109.25

EDGE OF WATER AS OF
SEPTEMBER 19, 2007
ELEVATION=109.22

PARCEL 10
N/F
CAMBRIDGE TOOL & MFG. CO. INC.
ASSESSED VALUE=\$63,000

PARCEL 9-129
N/F
MARIAM VIRRENT
ASSESSED VALUE=\$69,700

PARCEL 9-132
N/F
DEVELOPMENT
VALUE=\$152,600