

EDGE OF WATER AS OF
SEPTEMBER 19, 2007
ELEVATION=109.25

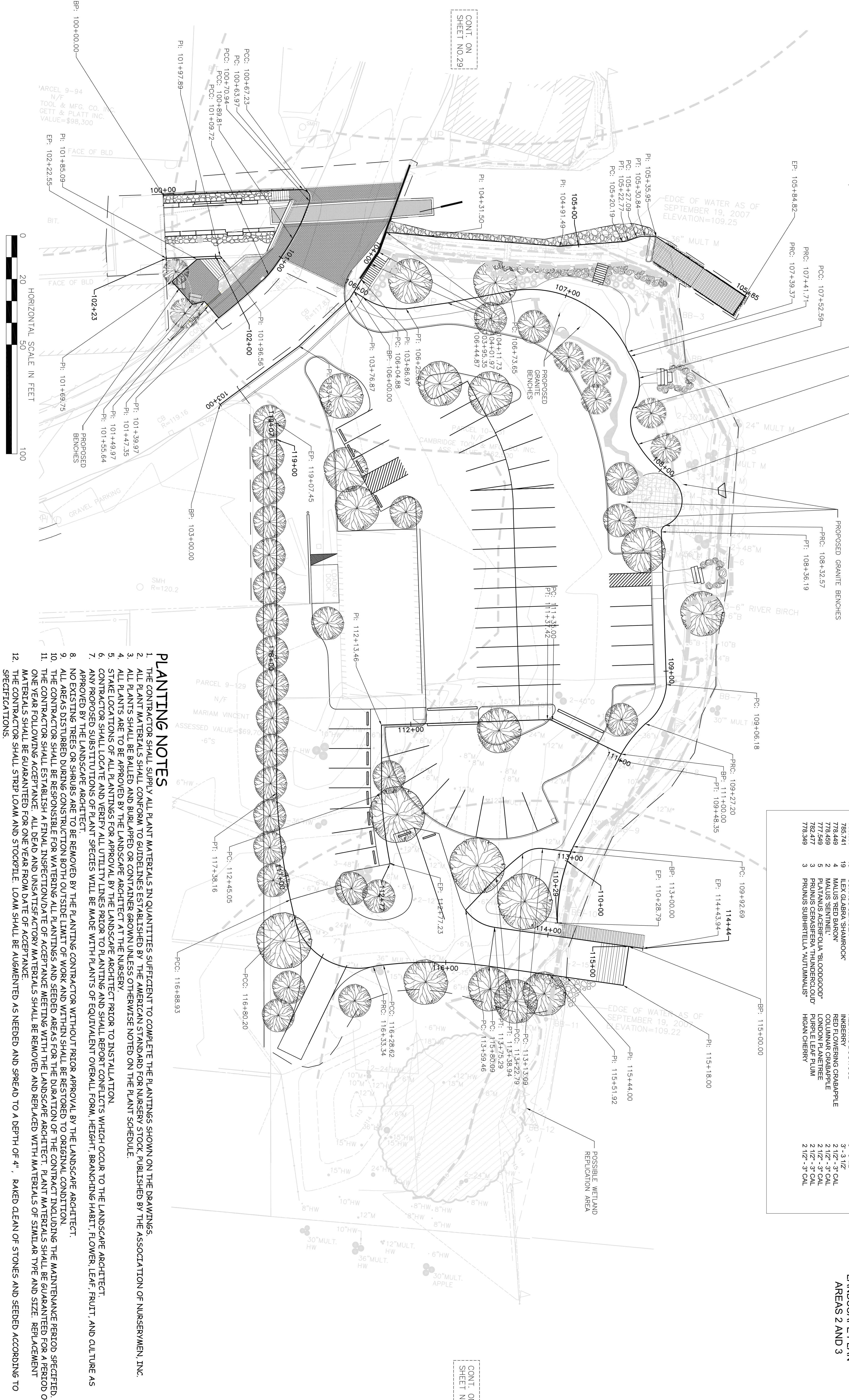
ITEM #	QTY.	BOTANICAL NAME	COMMON NAME	SIZE
783.043	2	Ametanchler canadensis	Shad Tree - Downey	3-3.5" Clump
781.045	4	Rhododendron Boule De Nèige	Rhodo - Boule De Nèige	24-30"
781.047	6	Rhododendron Nova Zembla	Rhodo - Nova Zembla	4-5"
776.333	12	Taxus cuspidata	Yew - Yew Spreading Japanese	2-2.5"

ITEM #	QTY.	BOTANICAL NAME	COMMON NAME	SIZE
776.545	5	ACER RUBRUM 'OCTOBER GLORY'	RED MAPLE	2 1/2" - 3" CAL
778.167	5	BETULA NIGRA 'RIVERSIDE'	RIVER BIRCH	20" - 22" CLUMP
775.055	4	CARPINUS BETULUS 'FASTIGIATA'	FRANCONIAN EUROPEAN HORNBREAM	2 1/2" - 3" CAL
781.027	3	CHIONANTHUS VIRGINICUS	FRANCONIAN EUROPEAN HORNBREAM	2 - 2 1/2" CAL
783.541	10	CLADONIA SEROTINA	YELLOWWOOD	2 1/2" - 3" CAL
785.025	19	CLADONIA SEROTINA	YELLOWWOOD	3" - 3 1/2"
778.449	2	MAIUS 'REDBARON'	RED TOWERING GRABAPPLE	2 1/2" - 3" CAL
778.459	2	MAIUS 'SENTINEL'	RED TOWERING GRABAPPLE	2 1/2" - 3" CAL
782.477	5	PRUNUS ACERIFOLIA 'THUNDERCLOUD'	LONDON PLANTLET	2 1/2" - 3" CAL
782.477	5	PRUNUS ACERIFOLIA 'THUNDERCLOUD'	PURPLE LEAF PLUM	2 1/2" - 3" CAL
778.349	3	PRUNUS SUBHIRELLA 'AUTUMNALIS'	HIGAN CHERRY	2 1/2" - 3" CAL

BILLERICA			
MIDDLESEX CANAL PARK			
STATE	FED AID PROJ. NO.	SHEET TOTAL	TOTAL SHEETS
MASS.		28	50
PROJECT FILE NO. 602945			
LANDSCAPE PLAN			
AREAS 2 AND 3			

PLANT LIST: AREA B - GUARD LOCK AREA

PLANT LIST: AREA C - MILL POND WEST



CONT. ON
SHEET NO.29

CONT. ON
SHEET NO.27

PLANTING NOTES

1. THE CONTRACTOR SHALL SUPPLY ALL PLANT MATERIALS IN QUANTITIES SUFFICIENT TO COMPLETE THE PLANTINGS SHOWN ON THE DRAWINGS.
2. ALL PLANT MATERIALS SHALL CONFORM TO GUIDELINES ESTABLISHED BY THE AMERICAN STANDARD FOR NURSERY STOCK, PUBLISHED BY THE ASSOCIATION OF NURSERYMEN, INC.
3. ALL PLANTS SHALL BE BALLED AND BURLAPPED OR CONTAINER GROWN UNLESS OTHERWISE NOTED ON THE PLANT SCHEDULE.
4. ALL PLANTS ARE TO BE APPROVED BY THE LANDSCAPE ARCHITECT AT THE NURSERY.
5. STAKE LOCATIONS OF ALL PLANTINGS FOR APPROVAL BY THE LANDSCAPE ARCHITECT AT THE NURSERY.
6. CONTRACTOR SHALL LOCATE AND VERIFY ALL UTILITY LINES PRIOR TO PLANTING AND SHALL REPORT CONFLICTS WHICH OCCUR TO THE LANDSCAPE ARCHITECT.
7. ANY PROPOSED SUBSTITUTIONS OF PLANT SPECIES WILL BE MADE WITH PLANTS OF EQUIVALENT OVERALL FORM, HEIGHT, BRANCHING HABIT, FLOWER, LEAF, FRUIT, AND CULTURE AS APPROVED BY THE LANDSCAPE ARCHITECT.
8. NO EXISTING TREES OR SHRUBS ARE TO BE REMOVED BY THE PLANTING CONTRACTOR WITHOUT PRIOR APPROVAL BY THE LANDSCAPE ARCHITECT.
9. ALL AREAS DISTURBED DURING CONSTRUCTION BOTH OUTSIDE LIMIT OF WORK AND WITHIN SHALL BE RESTORED TO ORIGINAL CONDITION.
10. THE CONTRACTOR SHALL BE RESPONSIBLE FOR WATERING ALL PLANTINGS AND SEEDED AREAS FOR THE DURATION OF THE CONTRACT INCLUDING THE MAINTENANCE PERIOD SPECIFIED.
11. THE CONTRACTOR SHALL ESTABLISH A FINAL INSPECTION/DATE OF ACCEPTANCE MEETING WITH THE LANDSCAPE ARCHITECT. PLANT MATERIALS SHALL BE GUARANTEED FOR A PERIOD OF ONE YEAR FOLLOWING ACCEPTANCE. ALL DEAD AND UNSATISFACTORY MATERIALS SHALL BE REMOVED AND REPLACED WITH MATERIALS OF SIMILAR TYPE AND SIZE. REPLACEMENT MATERIALS SHALL BE GUARANTEED FOR ONE YEAR FROM DATE OF ACCEPTANCE.
12. THE CONTRACTOR SHALL STRIP LOAM AND STOCKPILE. LOAM SHALL BE AUGMENTED AS NEEDED AND SPREAD TO A DEPTH OF 4". RAKED CLEAN OF STONES AND SEEDS ACCORDING TO SPECIFICATIONS.



PARCEL 9-94
N/F
TOOL & MFG. CO. INC.
GETT & PLATT INC.
VALUE = \$98,300

PARCEL 9-129
N/F
MARIAM VINCENT
ASSESSED VALUE = \$69,
-6'S